

“MUPPETS ROVENT”

R O V E N T 2 0 1 2

February 17th, 18th, 19th, 2012

www.rovent.ca

Location

Cambie Creek Nordic Area in Manning Park.

In case you have never been there before, it is approximately 2km East of the Ministry of Transportation Yard at Allison Pass, and approximately 7km West of the Manning Park Lodge. Signs will be posted. Check the following web pages for park info and maps:

BC PARKS: <http://www.env.gov.bc.ca/bcparks/explore/explore.html>

Manning Park Resort: <http://www.manningpark.com/>

Registration Fees:

Rovent 2012 registration fees, break down is as follows:

Register **by** January 26, 2012 **\$25.00 per person**

Register **after** January 26, 2012 **\$30.00 per person**

All participants on site must be registered with either Scouts Canada or GGC and must be registered for the camp.

Please ensure that each participant's Emergency Contact Form is fully completed.

The registration fee includes one Rovent crest per person.

Each group must attend with an advisor.

Risk Management

The package includes a Risk Management page and a set of camp rules.

Please read and review with your youth.

Advisors are responsible for their youth and must ensure that a copy of the health forms for each participant is on site. Our onsite medical support (MAST) has asked that all participant (leaders and youth) carry a copy of their personal health form on their person (ziplock works to keep it dry). This helps First Aid staff in the event of an emergency.

Travel

Please make sure your vehicles are ready for winter conditions, the cold is hard on batteries, fuel and cooling systems. It is best to have antifreeze rated for at least -40°C. If you have a diesel vehicle make sure you have added anti-gel additive to your tank. It's always a good idea to bring a spare tire and chains if you have them.

Going by **BUS**: Greyhound does provide transportation to Manning Park and can drop you off at the entrance to the camp – talk nicely with the driver.

You can reach Greyhound Vancouver at **604-683-8133** or

<http://www.greyhound.ca/>

rovent.ca

Parking

REMEMBER: If you bring a trailer you will be required to park it at the overflow parking. Parking on-site is extremely limited so please limit the number of vehicles you bring and DO NOT bring campers or motor-homes. Vehicles will be directed to a parking spot for the entire weekend and WILL NOT be able to leave until Sunday. We do have access to an overflow parking lot 2km down the highway. A shuttle is provided on Friday and Sunday. You must unload ALL of your belongings on-site before parking in the overflow lot. Only vehicles required for emergency purposes will be guaranteed parking with access to the highway.

What to Expect

A great time - if you're prepared. Please note this is an on site camp. This means you will not be able to leave to go skiing or for other activities. Don't worry though, our on site program will not disappoint. There will be many activities based on the camp theme to keep you busy. The infamous dance on Saturday night and rumour has it – a movie maybe showing. Look in this package for camp event and Scavenger hunt listings.

HAVE FUN – GET INVOLVED!

The thing to remember is that you are camping in the mountains in winter so be prepared for all kinds of weather from sunny and hot to cold and wet. Also bear in mind that there are no amenities of any kind at the campsite. You must bring everything with you and take it all out again when you leave. That includes your gear, food and WATER: there is **NO WATER** available at the site.

Cold Talk

The Cold Talk is aimed at groups or individuals who have not attended Rovent or who want a refresher on winter camping tips and safety precautions. It goes over the do's and don'ts of winter camping, covering topics such as clothing and equipment, food, shelter and hypothermia. You will still be able to register at the Cold Talk for the early registration fee of \$25.00. [See attached info sheet.](#)

Host Your Own Cold Talk

Not all groups can attend a cold talk in Vancouver area, so you can host a Cold Talk for your area if there isn't already one. This information will be posted on the Rovent website

www.rovent.ca

WANT TO HELP OUT?!?!?

Rovent is brought to you by a hardworking and dedicated group of volunteers known as the – “Friends of Rovent”. The camp staff is always looking for new ideas and people to help out. So if you are so inclined contact us at

info@rovent.ca

Feel free to talk with us at camp as well!

Some ways YOU can help: run an activity, develop a new activity, help with parking, help with clean up, help with ideas.

Pancake breakfast! (8 to 10 AM Sunday morning only)

rovent.ca

“MUPPETS ROVENT”

Rovent 2012

Group : _____ Scts Can ___ GGC _____

Section: Rovers ___ Venturers ___ Guild ___ Snr Br ___ Rgrs ___ Link ___ Cdts ___

Area and Council: _____ / _____

Registering prior to **January 26th, 2012**

Register _____ people at **\$25.00** each Total \$ _____

Registering after **January 26th, 2012**

Register _____ people at **\$30.00** each Total \$ _____

Add _____ additional crests at **\$2.00** each Total \$ _____

Note: there will be no refunds after **February 4th, 2012** Grand total \$ _____

PANCAKE BREAKFAST (tick if you wish to participate)

Please note: The group advisor must have completed health forms for each participant and each leader and youth must carry a copy of their personal health form on their person.

Advisor/Leader attending

Name: _____

Address: _____

Postal Code: _____ Phone: _____ Email: _____

Make cheques payable to: **Scouts Canada Rovent 2012**



Mail to:
Rovent 2012
c/o 21704 Mountain View Cres.
Maple Ridge, BC
V2X 3V1



Group Emergency Contact Form

Group : _____ Scts Can _____ GGC _____

Section: Rovers ___ Venturers ___ Guild ___ Snr Br ___ Rgrs ___ Link ___ Cdts ___

Area / Council: _____ / _____

Leader/Advisor(s): _____

Please list all Youth & Adult names along with an emergency contact name and phone number

Youth/Adult name	(circle)	Emergency Contact	Phone Number
1 Advisor	A		
2	Y A		
3	Y A		
4	Y A		
5	Y A		
6	Y A		
7	Y A		
8	Y A		
9	Y A		
10	Y A		
11	Y A		
12	Y A		
13	Y A		
14	Y A		
TOTAL Participants = _____			

Physical Fitness Certificates : advisor must have a copy for each participant on site. Each participant must also carry a copy on their person – ziplock bag works. This helps First Aid staff in the event of an emergency.

ROVENT 2013 SURVEY

In 2013 the Monday after the weekend Rovent is normally held may become the new “Family Day” statutory holiday in Canada. The Rovent organizing team would like to know if you want an extended 3 day camp or to keep the current two day format. There will be added booking costs to a 3 day format.

Please circle one:

2 days

3 days

Preferred days:

Fri/Sat/Sun

Sat/Sun/Mon

Fri/Sat/Sun/Mon

“MUPPETS ROVENT”

c a m p e v e n t s

Friday

8:00: **“Muppet Movie”** followed by
“Another Muppet Movie” (Movie Screenings)

Saturday

10:00: **“Curtain Call”**
 Opening Ceremonies

11:00: **“Fozzie’s Lanes”** Bowling

11:00: **“Super Grover’s** Something Race”

11:00: Parking Lot Hockey

11:00: Sign up for the Scavenger Hunt and get the on-site list (see below).

11:00: Sign up for the Miss Strawberry Flats Pre-Screening Contest (see below).

1:00: **“SwineTrek Space Walk”** Horizontal Bungee

1:00: **“Doozer Towers”** Obstacle Course

2:00: **“Back home at the Swamp”**
 Kermit’s Bottomless Boat Regatta
 (see enclosed instructions).

2:00: **“Gonzo and Rizzo the Rats List”**
 Scavenger Hunt Begins: This will consist of an on-site and off-site portion. **Scavenger Hunt list will be online soon or now!**

2:00: Deadline to sign up for the Sculpture and Gateway Contests (see below).

2:15: **“Fraggle Links”**
 Snow Golf

2:30: **“Miss Piggy’s Piggy Pagent”** The Miss Strawberry Flats Pre Screening Competition Begins (see across)

4:00: Snow Sculpture and Gateway Judging begins.

Saturday continued...

7:30: **“Miss Piggy’s Piggy Pagent”**
 The Miss Strawberry Flats Competition
 (see below).

Eight till Late: **“A Night out with Rowlf feat. Dr. Teeth and the Electric Mayhem”** (Dance)

“Miss Piggy’s Piggy Pagent” Strawberry Flats info

The Strawberry Flats Pre Screening Competition

This year, in order to ensure the contestants in our talent show have talent, all would-be contestants will be required to partake in the Pre-Screening Competition. This contest will be conducted behind closed doors where you will be assessed, by our panel of judges. You will be required to demonstrate your dancing talent, display your impressive costume, and answer a variety of skill testing questions. Only the top applicants will be permitted to participate on stage for the coveted title of Miss Strawberry Flats 2011.

We want real talent people, cross-dressing is one thing but at least be entertaining. Yes, I’m talking to you Dave.

The Miss Strawberry Flats Contest

The successful candidates from the Pre-Screening Competition will be able to show everyone what they've got by performing on stage Saturday night. They will be assessed, Idol style, for their routine, costume, and ability to answer skill testing questions. Only one will be lucky enough to take home the crown of Miss Strawberry Flats 2012.

Sunday

8 to 10AM: **“The Swedish Chef Pancake Breakfast”**

10:00: **“That’s a wrap”**
 Closing Ceremonies

2012 Off-site Scavenger Hunt List
The Muppets Yaaaaaay!

1. Fish being juggled
2. Sing the entire opening song to The Muppet Show
3. Statler and Waldorf's box seats
4. Fozzie's hat and scarf
5. The Swinetrek from "PIGSSS!!! IN!!! SPACE!!!!
6. Electric Mayhem's tour bus
7. An invention from Muppet Labs
8. Sing "Mahna Mahna" exactly as it was in the show
9. Ernie's rubber ducky
10. Oscar's trash collection
11. Doozer work helmets
12. Animal's drum kit
13. A Muppaphone
14. Scooter's jacket
15. The Swedish Chef's hat
16. Gonzo's motorcycle boots
17. Pepe's hair style
18. The Green Album
19. Kermit's Banjo
20. Muppet News Flash news reader's bad toupee and glasses

We're looking for creativity and effort here. As we've said before, please no internet print outs, you're not trying hard enough. Not only will you not be awarded points for print outs you will now also lose points for them. That's right.

There will also be an onsite portion to the scavenger hunt, just so you know.

ROVENT '12 Risk Management

Camp Location: Cambie Creek Group Site, E C Manning Provincial Park

Camp Headquarters and Registration

Registration: All participants must register before entering site.

INFO: Notice Board, Information and maps.

Communications: Camp & Security staff in communication by VHF radio. Emergency phone may be by Sat-phone, cell phone or through the Manning Park Lodge. Cell coverage is intermittent (but getting better).

NB: Manning Park Resort 1-250-840-0013 or Park Ranger 1-250-840-8708

HAVE ISSUES: Report all concerns to H.Q. or First Aid 24/7.

Boundaries are: The southern boundary is the ridge 30m off Highway. The hill to the North & NW behind HQ and parking lot is off limits. The top of the ridge (hill) on the East & NE side of the campfield is the Eastern Boundary. **Parking:** Once on site, participants may not leave the site. Once parked, you will not be able to move your vehicle until camp closing. You can make special arrangements for parking if you need to make an early departure (contact camps staff on site before parking).

Scouts Canada's By-law, Policies and Procedures are being followed.

GGC Safe Guide, Policy, Organization and Rules are being followed.

Group Advisors are responsible for their participants. All groups are required to have an advisor.

NOTE: **GGC groups** - paperwork should be submitted to an Assessor at least **14 DAYS** prior to the camp.

First Aid

1st Aid - MAST - first aid staff on site, located in a tent in the parking lot.

Incident reporting and recording. All incidents are to be reported to First Aid staff. If you are not sure better to ask!

Hospital - Fraser Canyon Hospital 1275 - 7th Avenue, Hope,
Phone (604) 869-5656 (approx. 1 hour drive west of site)

Physical Fitness Certificate/Personal Health Form : advisor must have a copy for each participant on hand. Each participant must also carry a copy on their body - ziplock bag works well.

WATER: all groups must bring their own water supply. **NO WATER** on site!

NOTE: **GGC groups** need to have at least one adult supervisor with a current Emergency First Aid Certificate (at a minimum) or is a health care professional.

Emergency

In the event of an emergency there will be 3 long horn blasts, all participants to meet at the parking lot / HQ area. In the event of an evacuation meet at Parking Area - advisors will be required to sign in and account for all their participants.

ROVENT RULES and REGULATIONS (also see Risk Management)

- All participants on site must be registered with Scouts Canada or Girl Guides Canada and must be registered for the camp.
- When you arrive at Rovent you will be checked in and each vehicle will be directed to a parking spot for the weekend.

This is the time to tell staff if you need to make an early exit on Sunday, so that you will be parked at the overflow lot.

- This is a Scouting event which means
no alcoholic beverages or non prescription drugs.
There is a zero tolerance for this, and anyone found abusing this rule will be asked to leave immediately.
- You will also be asked to leave if you are found creating a situation that puts others at risk.
- No camping in the trees.
- No sleeping in vehicles unless prearranged with Rovent staff (cars = refrigerators)
- Things NOT to bring to RoVent:
 - Hay : BC Parks does not allow it .
 - Pets - Rovent is no place for them.
 - Fireworks, firecrackers, flares etc. – enough said.
- Some more common sense guidelines are as follows:
 - The hill behind the parking lot is off limits. it is prone to avalanche so stay away.
 - The ridge next to the highway is also off limits.
- A couple notes on sledding or snowboarding.
 - Don't go down the back of the hill on the far side of the field. If you negotiate the trees there is still the river at the bottom.
 - Don't do it by flashlight once the sun goes down - it's a long drive to the hospital in Hope.
- Throwing snowballs is OK, just do it in the field and not among the campsites, people and equipment can and have been injured or damaged.
- We practice no trace camping as much as possible, so **you must carry out all your garbage, firewood and building materials.** This is a wilderness area and we try to keep it that way.
- You must breakdown the sides of your holes and fill as best you can - if you dig in, cover it up.
- ***NO VEHICLES PAST THE BOUNDARIES OF THE PARKING LOT AS DESIGNATED BY THE SNOWBANK***

ROVENT "COLD TALK"

Date: Tuesday, January 10, 2012

Time: 7:00PM to 9:30PM

Location: BCIT Burnaby Campus, 3700 Willingdon Ave., Burnaby
Building SE6 Room 233 (BC Tel Lecture Theatre) central part of campus, see maps.

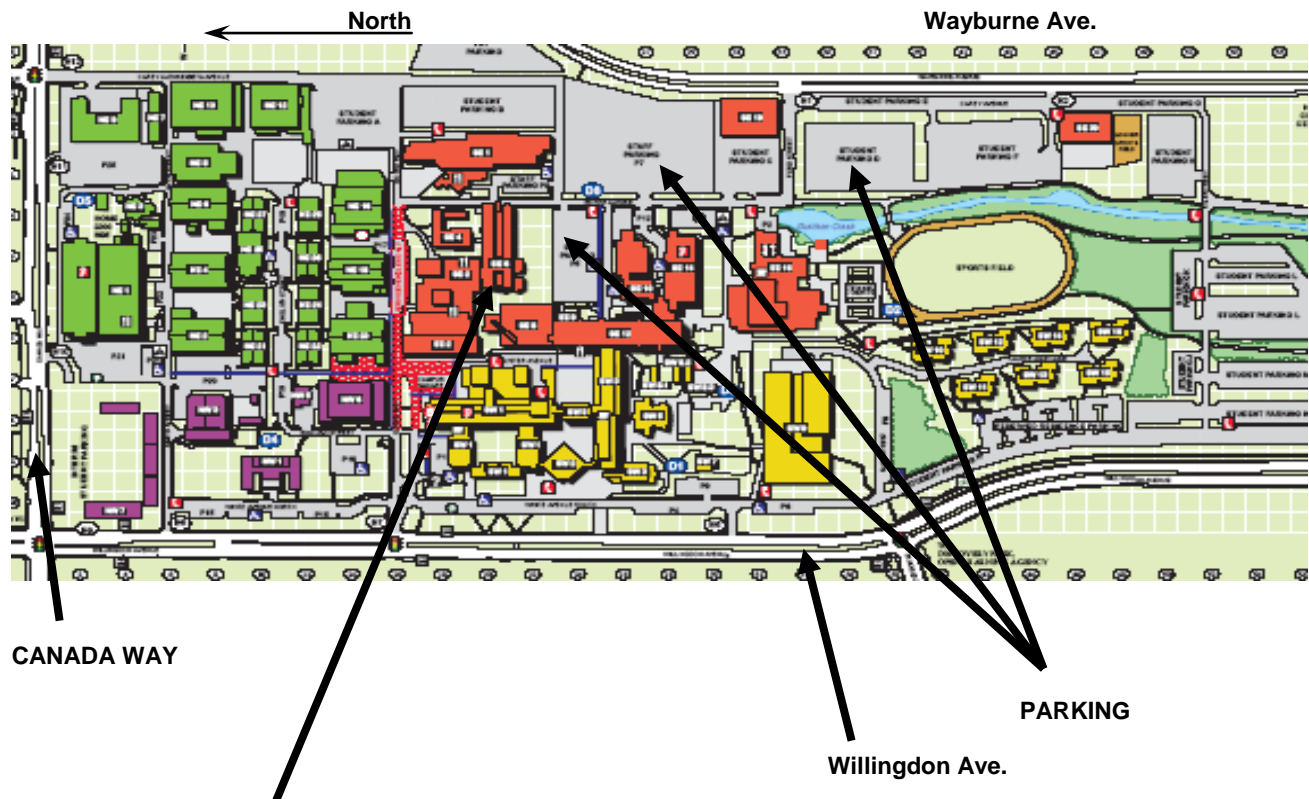
Access: *Mass Public Transportation:* there are several bus routes that get you near to BCIT. Busses will deliver you to Willingdon Ave. and along Canada Way on the North side of the Campus. There are campus info maps around, find one and navigate your way to the SE6 building. **Check www.translink.bc.ca**

Your own Private Wheels: **NB: DO NOT ENTER CAMPUS from Willingdon Ave.**
Here are the 2 best ways to access the campus to find a Parking lot.

1. From CANADA WAY: East of Willingdon on Canada Way, turn south onto Carey Ave. (across from BCAA building), turn right (west) onto Goard Way, turn left (south) on Roper Ave., travel 150m SE6 is on your right. Find yourself a parking spot.
2. From WAYBURNE AVE.: Wayburne Ave, runs along the East side of the Campus. Turn west onto Ford St., Ford does a 90 degree turn to the north and becomes Roper Ave., Find yourself a parking spot. SE6 is on the west side of Roper Ave. about 300m after the 90 degree turn.

Parking: Cost \$3.50 at a ticket meter, so bring your loonies/toonies. There are several parking lots on Campus. Lot 7 is the closest. Arrive a bit early (6:30 to 6:45) as you will be competing with the night school crowd for parking spaces.

Check out maps on BCIT's website <http://www.bcit.ca/> look for Campuses and Maps under quick Links



YOUR DESTINATION : Building SE6 Room 233 (BC Tel Theatre)

Building a Bottomless Boat

These are just suggestions, feel free to be as creative as you like

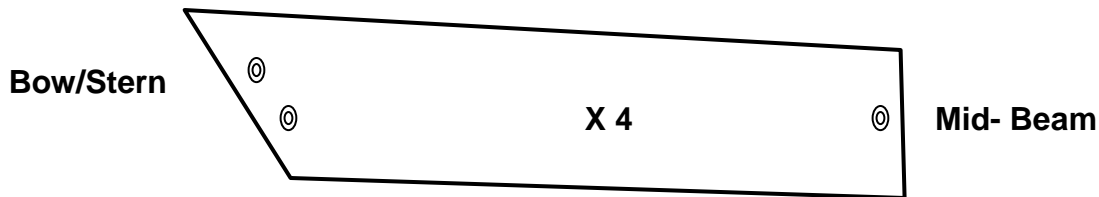
Base Materials : sheet of plywood (1/4" max) or plywood scraps.

6 x 3/4" or 1" sturdy bolts, with nuts and lock washers (wing nuts help for ease of dismantling)

At least 4 Large flat washers

Additional Materials : Paints, decorations to suit

Step 1. Cut 4 pieces approximately 4 ft long by 1.5 ft deep, Cut to your own design size and shape.



Step 2. At the Bow/Stern ends of each piece drill 2 holes to fit bolt size, 6" - 8" apart, and 1"- 2" from edge. At the mid-beam ends drill one hole about 2" to 4" from the edge at mid depth. NB: All holes should match on all pieces.

Step 3. Paint and decorate to your hearts content.

Step 4. To construct: Make two halves of the boat by bolting two bow/stern ends together. Then bolt the corresponding mid-beam joints. Place two large flat washers between the plywood, when bolting the mid-beam, this allows for flexibility. The nut ends of the bolts should be placed facing out, to avoid injuring crew. If you use 1/4" ply the sides will be flexible enough to widen the beam.

Step 5. To Race:

- You need 2 to 4 crewmen (or more).
- The crew stands between the starboard and port sides
- Run the course as directed.

Step 6. Make modifications as desired: here are some ideas:

- Cut hand holds for crew to carry boat
- Add shoulder ropes for each crewmember to help carry
- Add a couple of cross beam stabilizers to give boat width
- Add trappings that any good Captain would have in his vessel.